

| <b>Miniature pilot / poppet valves</b>                         |  | <b>Page numbers</b> |
|--|--|---------------------|
| 1/8"   | 3/2 General description                                | 700.2               |
| <b>Miniature pilot / poppet valves - Body mounted</b>          |  | <b>Page numbers</b> |
| 1/8"   | 3/2 Roller operated, spring return                     | 700.3, 700.4        |
| 1/8"   | 3/2 Diaphragm operated, spring return                  | 700.3, 700.4        |
| 1/8"   | 3/2 Pilot air operated, spring return                  | 700.3, 700.4        |
| 1/8"   | 3/2 Ball operated, spring return                       | 700.3, 700.4        |
| 1/8"   | 3/2 Gaitered plunger operated, spring return           | 700.3, 700.4        |
| <b>Miniature pilot / poppet valves - Body or panel mounted</b> |  | <b>Page numbers</b> |
| 1/8  | 3/2 Pushbutton operated, spring return                 | 700.3, 700.5        |
| 1/8"   | 3/2 Toggle switch operated, 2 position positive        | 700.3, 700.5        |
| 1/8"   | 3/2 Pad operated, spring return                        | 700.3, 700.5        |
| <b>Miniature pilot / poppet valves - Panel mounted</b>         |  | <b>Page numbers</b> |
| 1/8"   | 3/2 Guarded pushbutton operated, spring return         | 700.3, 700.6        |
| 1/8"   | 3/2 Mushroom pushbutton operated , 2 position positive | 700.3, 700.6        |
| 1/8"   | 3/2 Rotary switch operated, 2 position positive        | 700.3, 700.6        |
| 1/8"   | 3/2 Key operated, 2 position positive                  | 700.3, 700.6        |
| <b>Heavy duty poppet valves</b>                                |  | <b>Page numbers</b> |
| 1/4", 3/8", 1/2",<br>3/4", 1", 1 1/4", 1 1/2"                  | 2/2 + 3/2 General description                          | 700.7               |
| 1/4", 3/8", 1/2"   | 3/2 Pilot solenoid operated, spring return             | 700.8, 700.9        |
| 3/4", 1", 1 1/4", 1 1/2"                                       | 3/2 Pilot solenoid operated, spring return             | 700.8, 700.9        |
| 1/4", 3/8", 1/2"   | 3/2 Pilot air operated, spring return                  | 700.8, 700.10       |
| 3/4", 1", 1 1/4", 1 1/2"                                       | 3/2 Pilot air operated, spring return                  | 700.8, 700.10       |

# 1/8" BSP 3/2 MINIATURE PILOTT/POPPET VALVES

*Air, Manual, Mechanically operated*

## General description and benefits

Miniature 3 way, 2 position pilot valves. Air, manual or mechanically operated. Normally closed operation. Universal versions available.

- Compact.
- High flow.
- Sealed mid position during transition.
- Pilot operation of larger directional control valves or direct operation of single acting cylinders.

## Operating fluids

### Compressed air

Filtered and lubricated or non lubricated up to 10 bar (145 psi). ISO VG37 mineral oil (or equivalent) is recommended for use at normal ambient temperatures in lubricated systems.

## Functional symbol

3/2 Normally Closed (N/C)



3/2 Universal operation (UNIV)



## Technical data

### Ports

1/8" BSP  
1/8" BSP pilot ports

### Cv (Kv)

0.26 (3.7)

### Working pressure

Normally closed  
0.3 to 10 bar (4.4 to 100 psi)

Normally open  
0.3 to 7 bar (4.4 to 100 psi)

Pilot air - air operated  
2 bar (29 psi)

Pilot air - diaphragm operated  
0.24 bar (3.5 psi)

### Working temperature

-10°C to +75°C (15°F to 167°F)

### Flow

at 7 bar (100 psi) to atmosphere  
6.7 dm<sup>3</sup>/sec (14.2 SCFM)

### Operating effort

at 6.3 bar (90 psi) to atmosphere

|               |        |
|---------------|--------|
| 1323M2G-BM1B  | 25N    |
| 1323M20-BM1B  | 0.33NM |
| 1324M2G-BM1B  | 0.33NM |
| 1323M2G5BM1B* | 25N    |
| 1323M77-BM1B  | 55N    |
| 1323M27-BM1B* | 25N    |
| 1323M2L-BM1B  | 25N    |
| 1323M26-BM1B  | 25N    |
| 1323M28-BM1B  | 15N    |

\* = Button colour (see model code/preferred models)

### Stroke

Nominal stroke of valve spindle  
3.25mm

Additional overtravel  
0.75mm approximately



## Materials of construction

### Body

Brass

### Poppet

Nitrile

### Spindle and springs

Stainless steel

### Seals

Nitrile

## Model code

1 3 2 \* \* \* \* \* B M 1 B \*

① ② ③ ④ ⑤ ⑥ ⑦ ⑧ ⑨ ⑩ ⑪ ⑫ ⑬

① **Size**  
1 = 1/8"

④ **Type**  
3 = Poppet N/C  
4 = Poppet UNIV

② **Number of ports**  
3 = 3

⑤ **Function**  
B = Bi stable  
M = Mono stable

③ **Number of positions**  
2 = 2

⑥ **Operator LH**  
0 = Switch  
2 = Spring  
7 = Pad  
9 = Key

⑦ **Operator RH**  
0 = Switch  
1 = Air  
6 = Mechanical plunger (Gaitered)  
7 = Pad  
8 = Lever Roller  
9 = Key  
G = Button  
L = Ball

⑧ **Accessories**  
- = None  
1 = Servo  
5 = Panel mounted

⑨ **Material**  
B = Brass/nitrile

⑩ **Style**  
M = VM

⑪ **Port type**  
1 = BSP

⑫ **Porting**  
B = Body ported

⑬ **Button colour**  
B = Black  
G = Green  
R = Red  
Y = Yellow

# 1/8" BSP 3/2 MINIATURE PILOT/POPPET VALVES

*Air, Manual, Mechanically operated*

**HEAVY  
DUTY  
VALVES**

## Preferred models Body mounted

| Model No     | Description  | Mass kg (lbs) | Symbol |
|--------------|--|---------------|--------|
| 1323M28-BM1B | 1/8"BSP 3/2 Roller operated, N/C, spring return      | 0.24 (0.53)   |        |
| 1324M28-BM1B | 1/8"BSP 3/2 Roller operated, UNIV, spring return     | 0.24 (0.53)   |        |
| 1323M211BM1B | 1/8"BSP 3/2 Diaphragm operated, N/C, spring return   | 0.53 (1.20)   |        |
| 1324M211BM1B | 1/8"BSP 3/2 Diaphragm operated, UNIV, spring return  | 0.53 (1.20)   |        |
| 1323M21-BM1B | 1/8"BSP 3/2 Pilot air operated, N/C, spring return   | 0.28 (0.60)   |        |
| 1324M21-BM1B | 1/8"BSP 3/2 Pilot air operated, UNIV, spring return  | 0.28 (0.60)   |        |
| 1323M2L-BM1B | 1/8"BSP 3/2 Ball operated, spring return             | 0.21 (0.47)   |        |
| 1323M26-BM1B | 1/8"BSP 3/2 Gaitered plunger operated, spring return | 0.21 (0.47)   |        |

## Body or panel mounted

| Model No      | Description   | Mass kg (lbs) | Symbol |
|---------------|---|---------------|--------|
| 1323M2G-BM1B  | 1/8"BSP 3/2 Pushbutton operated, spring return                | 0.21 (0.47)   |        |
| 1323B00-BM1B  | 1/8"BSP 3/2 Toggle switch operated, N/C, 2 position positive  | 0.21 (0.47)   |        |
| 1324B00-BM1B  | 1/8"BSP 3/2 Toggle switch operated, UNIV, 2 position positive | 0.21 (0.47)   |        |
| 1323M27-BM1BB | 1/8"BSP 3/2 Pad operated (Black), spring return               | 0.23 (0.50)   |        |
| 1323M27-BM1BG | 1/8"BSP 3/2 Pad operated (Green), spring return               | 0.23 (0.50)   |        |
| 1323M27-BM1BR | 1/8"BSP 3/2 Pad operated (Red), spring return                 | 0.23 (0.50)   |        |

## Panel mounted

| Model No      | Description   | Mass kg (lbs) | Symbol |
|---------------|---|---------------|--------|
| 1323M2G5BM1BB | 1/8"BSP 3/2 Guarded pushbutton (Black), spring return         | 0.39 (0.87)   |        |
| 1323M2G5BM1BG | 1/8"BSP 3/2 Guarded pushbutton (Green), spring return         | 0.39 (0.87)   |        |
| 1323M2G5BM1BR | 1/8"BSP 3/2 Guarded pushbutton (Red), spring return           | 0.39 (0.87)   |        |
| 1323M2G5BM1BY | 1/8"BSP 3/2 Guarded pushbutton (Yellow), spring return        | 0.39 (0.87)   |        |
| 1323B775BM1B  | 1/8"BSP 3/2 Mushroom pushbutton operated, 2 position positive | 0.44 (0.97)   |        |
| 1323B005BM1B  | 1/8"BSP 3/2 Rotary switch operated, 2 position positive       | 0.44 (0.97)   |        |
| 1323B995BM1B  | 1/8"BSP 3/2 Key operated, 2 position positive                 | 0.44 (0.97)   |        |

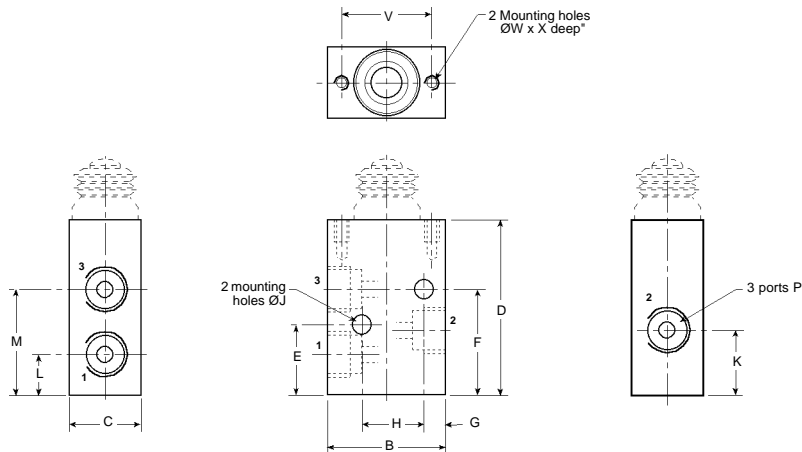
# HEAVY DUTY VALVES

## 1/8" BSP 3/2 MINIATURE PILOT/POPPET VALVES

Air, Manual, Mechanically operated

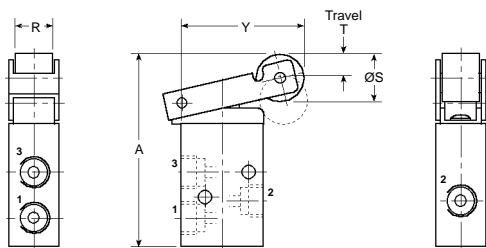
### Installation dimensions mm Body mounted valves

#### 3/2 Basic valve 1/8"



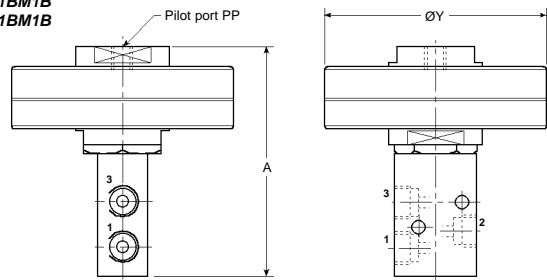
#### 3/2 Roller operated, spring return 1/8"

1323M28-BM1B  
1324M28-BM1B



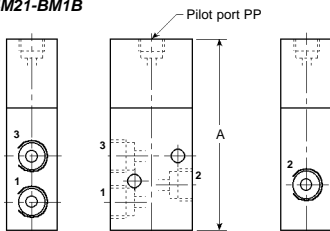
#### 3/2 Diaphragm operated, spring return 1/8"

1323M211BM1B  
1324M211BM1B



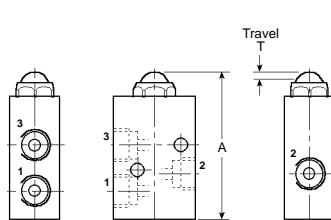
#### 3/2 Pilot air operated, spring return 1/8"

1323M21-BM1B  
1324M21-BM1B



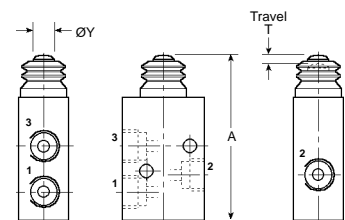
#### 3/2 Ball operated, spring return 1/8"

1323M2L-BM1B



#### 3/2 Gaitered plunger operated, spring return 1/8"

1323M26-BM1B



| Model No     | A    | B  | C  | D  | E  | F    | G | H    | J    | K    | L  | M    | P       | PP      | R | S  | T    | V  | W  | X | Y    |
|--------------|------|----|----|----|----|------|---|------|------|------|----|------|---------|---------|---|----|------|----|----|---|------|
| 1323M28-BM1B | 74   | 32 | 19 | 47 | 19 | 28.5 | 6 | 16.5 | 5.25 | 17.5 | 11 | 28.5 | 1/8"BSP | -       | 9 | 19 | 8.7  | 24 | M4 | 7 | 47.5 |
| 1323M211BM1B | 88.5 | 32 | 19 | 47 | 19 | 28.5 | 6 | 16.5 | 5.25 | 17.5 | 11 | 28.5 | 1/8"BSP | 1/8"BSP | - | -  | -    | 24 | M4 | 7 | 86   |
| 1323M21-BM1B | 74   | 32 | 19 | 47 | 19 | 28.5 | 6 | 16.5 | 5.25 | 17.5 | 11 | 28.5 | 1/8"BSP | 1/8"BSP | - | -  | -    | 24 | M4 | 7 | -    |
| 1323M2L-BM1B | 56.5 | 32 | 19 | 47 | 19 | 28.5 | 6 | 16.5 | 5.25 | 17.5 | 11 | 28.5 | 1/8"BSP | -       | - | -  | 3.25 | 24 | M4 | 7 | -    |
| 1323M26-BM1B | 63   | 32 | 19 | 47 | 19 | 28.5 | 6 | 16.5 | 5.25 | 17.5 | 11 | 28.5 | 1/8"BSP | -       | - | -  | 3.25 | 24 | M4 | 7 | ?    |

\* 3 = NORMALLY CLOSED, 4 = UNIVERSAL

**MIDLAND**  
PNEUMATIC

# 1/8" BSP 3/2 MINIATURE PILOT/POPPET VALVES

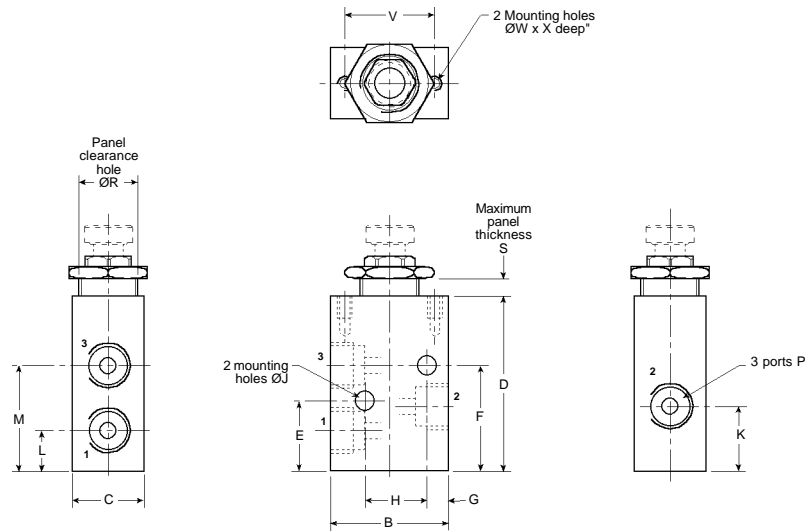
**HEAVY  
DUTY  
VALVES**

*Air, Manual, Mechanically operated*

## Installation dimensions mm

Body mounted or panel mounted valves

**3/2 Basic valve  
1/8"**



**3/2 Pushbutton operated,  
spring return  
1/8"**

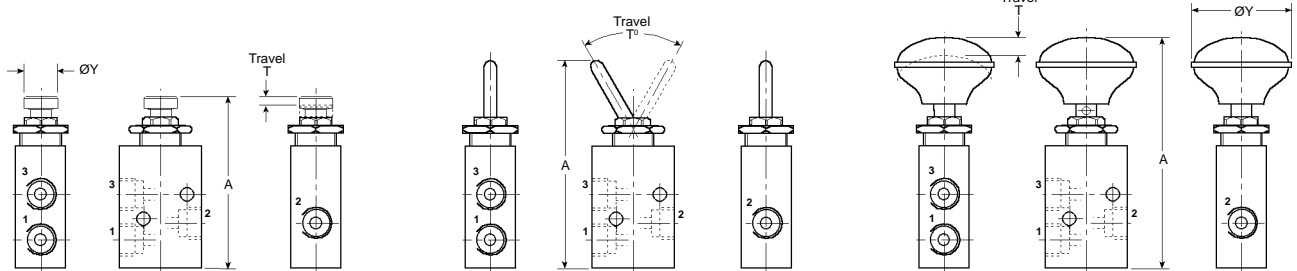
1323M2G-BM1B

**3/2 Toggle switch operated,  
2 position positive  
1/8"**

1323B00-BM1B  
1324B00-BM1B

**3/2 Pad operated,  
spring return  
1/8"**

1323M27-BM1BB  
1323M27-BM1BG  
1323M27-BM1BR



| Model No                  | A  | B  | C  | D  | E  | F    | G | H    | J    | K    | L  | M    | P       | R  | S    | T    | V  | W  | X | Y  |
|---------------------------|----|----|----|----|----|------|---|------|------|------|----|------|---------|----|------|------|----|----|---|----|
| 1323M2G-BM1B              | 66 | 32 | 19 | 47 | 19 | 28.5 | 6 | 16.5 | 5.25 | 17.5 | 11 | 28.5 | 1/8"BSP | 16 | 4.75 | 3.25 | 24 | M4 | 7 | 13 |
| 1324B00-BM1B              | 80 | 32 | 19 | 47 | 19 | 28.5 | 6 | 16.5 | 5.25 | 17.5 | 11 | 28.5 | 1/8"BSP | 16 | 4.75 | 60°  | 24 | M4 | 7 | -  |
| 1323M27-BM1B <sup>+</sup> | 88 | 32 | 19 | 47 | 19 | 28.5 | 6 | 16.5 | 5.25 | 17.5 | 11 | 28.5 | 1/8"BSP | 16 | 4.75 | 3.25 | 24 | M4 | 7 | 38 |

\* 3 = NORMALLY CLOSED, 4 = UNIVERSAL

<sup>+</sup> Button colour - B = Black, G = Green, R = Red

**MIDLAND  
PNEUMATIC**

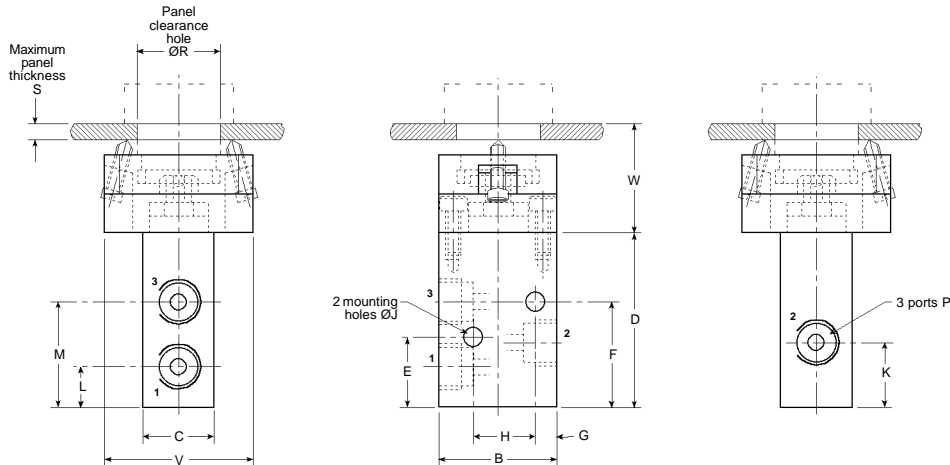
# HEAVY DUTY VALVES

## 1/8" BSP 3/2 MINIATURE PILOT/POPPET VALVES

Air, Manual, Mechanically operated

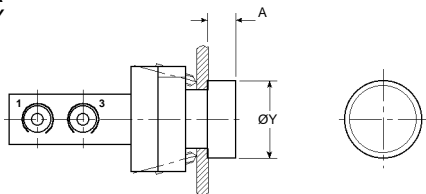
### Installation dimensions mm Panel mounted valves

#### 3/2 Basic valve 1/8"



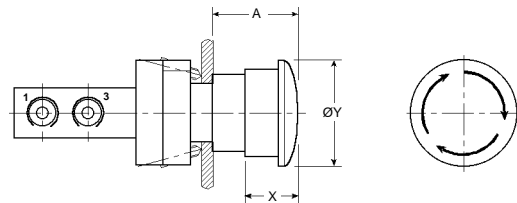
#### 3/2 Guarded pushbutton operated, spring return 1/8"

1323M2G5BM1BB  
1323M2G5BM1BG  
1323M2G5BM1BR  
1323M2G5BM1BY



#### 3/2 Mushroom pushbutton operated, 2 position positive 1/8"

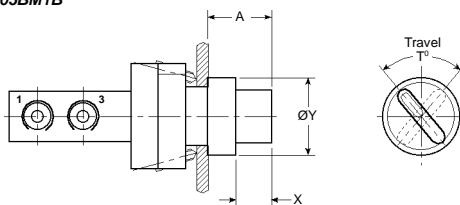
1323B775BM1B



Note: Operating button colour RED - Twist to reset

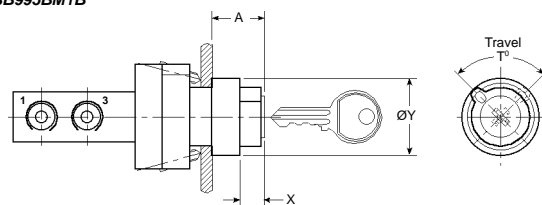
#### 3/2 Rotary switch operated, 2 position positive 1/8"

1323B005BM1B



#### 3/2 Key operated, 2 position positive 1/8"

1323B995BM1B



Note: Key removable in both positions

| Model No      | A  | B  | C  | D  | E  | F    | G | H    | J    | K    | L  | M    | P       | R  | S | T   | V  | W  | X  | Y  |
|---------------|----|----|----|----|----|------|---|------|------|------|----|------|---------|----|---|-----|----|----|----|----|
| 1323M2G5BM1B* | 11 | 32 | 19 | 47 | 19 | 28.5 | 6 | 16.5 | 5.25 | 17.5 | 11 | 28.5 | 1/8"BSP | 22 | 7 | -   | 40 | 36 | -  | 29 |
| 1323B775BM1B  | 32 | 32 | 19 | 47 | 19 | 28.5 | 6 | 16.5 | 5.25 | 17.5 | 11 | 28.5 | 1/8"BSP | 22 | 7 | -   | 40 | 36 | 20 | 40 |
| 1323B005BM1B  | 25 | 32 | 19 | 47 | 19 | 28.5 | 6 | 16.5 | 5.25 | 17.5 | 11 | 28.5 | 1/8"BSP | 22 | 7 | 80° | 40 | 36 | 14 | 29 |
| 1323B995BM1B  | 19 | 32 | 19 | 47 | 19 | 28.5 | 6 | 16.5 | 5.25 | 17.5 | 11 | 28.5 | 1/8"BSP | 22 | 7 | 90° | 40 | 36 | 8  | 29 |

\* Button colour - B = Black, G = Green, R = Red, Y = Yellow

# MIDLAND PNEUMATIC

# 1/4", 3/8", 1/2", 3/4", 1", 1 1/4", 1 1/2" BSP 3/2 POPPET VALVES

**HEAVY  
DUTY  
VALVES**

*Pilot solenoid, Pilot air operated*

## General description and benefits

A range of heavy duty 2/2 and 3/2 pilot solenoid and pilot air operated poppet valves in aluminium for use on compressed air.

- Heavy duty.
- High flow.
- Compact.
- Normally open (N/O) or normally closed (N/C) operation

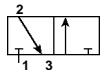
## Operating fluids

### Compressed air

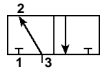
Filtered and lubricated compressed air up to 7 bar (100 psi). ISO VG37 mineral oil (or equivalent) is recommended for use at normal ambient temperatures.

## Functional symbols

3/2 Normally Closed (N/C)



3/2 Normally Open (N/O)



## Technical data

### Ports

1/4", 3/8", 1/2", 3/4", 1" BSP  
(1/8" BSP pilot ports)  
1 1/4", 1 1/2" BSP  
(1/4" BSP pilot ports)

### Cv (Kv)

|                      |                      |
|----------------------|----------------------|
| 1/4" - 1.10 (16)     | 3/8" - 2.20 (32)     |
| 1/2" - 3.00 (43)     | 3/4" - 7.50 (107)    |
| 1" - 10.20 (145)     | 1 1/4" - 14.00 (200) |
| 1 1/2" - 18.00 (257) |                      |

### Working pressure

2 to 10 bar (29 to 145 psi)

### Working temperature

-20°C to +70°C (-4°F to +158°F)

### Minimum pilot pressure

3.0 bar (43.5 psi) at 2 bar mains  
7.0 bar (100 psi) at 10 bar mains

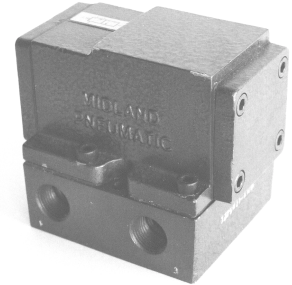
### Maximum flow

at 7 bar (100 psi) to atmosphere

|  |
|--|
| 1/4" - 29 dm <sup>3</sup> /sec (62 SCFM)     |
| 3/8" - 71 dm <sup>3</sup> /sec (150 SCFM)    |
| 1/2" - 87 dm <sup>3</sup> /sec (184 SCFM)    |
| 3/4" - 238 dm <sup>3</sup> /sec (504 SCFM)   |
| 1" - 279 dm <sup>3</sup> /sec (592 SCFM)     |
| 1 1/4" - 356 dm <sup>3</sup> /sec (755 SCFM) |
| 1 1/2" - 457 dm <sup>3</sup> /sec (970 SCFM) |

### Solenoid

Fully encapsulated, Class F coil fitted with 3 pin socket connector to DIN43650A with gland screw at cable entry.  
9W DC, 9W AC (inrush 32VA)



## Materials of construction

### Body

Stove enamelled aluminium alloy

### Poppet

Nitrile

### Spindle and springs

Stainless steel

### Seals

Nitrile  
(Fluoroelastomer to special order)

## Model code

\* 3 \* 5 \* \* \* \* \* \* \* 1 \* \* \*

① ② ③ ④ ⑤ ⑥ ⑦ ⑧ ⑨ ⑩ ⑪ ⑫ ⑬ ⑭

### ① Size

2 = 1/4"  
3 = 3/8"  
4 = 1/2"  
6 = 3/4"  
8 = 1"  
5 = 1 1/4"  
7 = 1 1/2"

### ③ Number of positions

2 = 2

### ⑥ Operator LH

2 = Spring

### ⑨ Material

A = Aluminium/nitrile

### ⑫ Port style

P = With port block

### ④ Type

5 = Poppet N/C & N/O

### ⑦ Operator RH

1 = Air  
3 = Solenoid  
4 = Solenoid  
(separate supply)

### ⑩ Style

M = VM

### ⑬ Solenoid type

4 = 32mm solenoid  
(non hazardous)  
X = without coil and operator  
Z = M20 x 1.5 interface

### ② Number of ports

3 = 3

### ⑤ Function

M = Mono stable

### ⑧ Accessories

- = None  
P = Manual override  
(on solenoid)

### ⑪ Port type

1 = BSP

### ⑭ Solenoid voltage code

D = 24v DC  
M = 110v 50/60Hz AC  
S = 220/230v 50/60Hz AC  
other voltages to special order

**MIDLAND  
PNEUMATIC**



**Preferred models**

**3/2 Pilot solenoid operated, spring return**

| Model No        | Description   | Mass kg (lbs) | Symbol |
|-----------------|---|---------------|--------|
| 2325M24-AM1P4 + | 1/4"BSP 3/2 Pilot solenoid operated, spring return                    | 1.19 (2.62)   |        |
| 2325M24PAM1P4 + | 1/4"BSP 3/2 Pilot solenoid operated, spring return, manual override   | 1.19 (2.62)   |        |
| 3325M24-AM1P4 + | 3/8"BSP 3/2 Pilot solenoid operated, spring return                    | 1.19 (2.62)   |        |
| 3325M24PAM1P4 + | 3/8"BSP 3/2 Pilot solenoid operated, spring return, manual override   | 1.19 (2.62)   |        |
| 4325M24-AM1P4 + | 1/2"BSP 3/2 Pilot solenoid operated, spring return                    | 1.19 (2.62)   |        |
| 4325M24PAM1P4 + | 1/2"BSP 3/2 Pilot solenoid operated, spring return, manual override   | 1.19 (2.62)   |        |
| 6325M24-AM1P4 + | 3/4"BSP 3/2 Pilot solenoid operated, spring return                    | 3.79 (8.36)   |        |
| 6325M24PAM1P4 + | 3/4"BSP 3/2 Pilot solenoid operated, spring return, manual override   | 3.79 (8.36)   |        |
| 8325M24-AM1P4 + | 1"BSP 3/2 Pilot solenoid operated, spring return                      | 3.79 (8.36)   |        |
| 8325M24PAM1P4 + | 1"BSP 3/2 Pilot solenoid operated, spring return, manual override     | 3.79 (8.36)   |        |
| 5325M24-AM1P4 + | 1 1/4"BSP 3/2 Pilot solenoid operated, spring return                  | 5.29 (11.66)  |        |
| 5325M24PAM1P4 + | 1 1/4"BSP 3/2 Pilot solenoid operated, spring return, manual override | 5.29 (11.66)  |        |
| 7325M24-AM1P4 + | 1 1/2"BSP 3/2 Pilot solenoid operated, spring return                  | 5.29 (11.66)  |        |
| 7325M24PAM1P4 + | 1 1/2"BSP 3/2 Pilot solenoid operated, spring return, manual override | 5.29 (11.66)  |        |

+ Specify solenoid voltage (see model code position 14 on page 700.7)

**3/2 Pilot air operated, spring return**

| Model No     | Description                                     | Mass kg (lbs) | Symbol |
|--------------|---|---------------|--------|
| 2325M21-AM1P | 1/4"BSP 3/2 Pilot air operated, spring return   | 0.90 (1.98)   |        |
| 3325M21-AM1P | 3/8"BSP 3/2 Pilot air operated, spring return   | 0.90 (1.98)   |        |
| 4325M21-AM1P | 1/2"BSP 3/2 Pilot air operated, spring return   | 0.90 (1.98)   |        |
| 6325M21-AM1P | 3/4"BSP 3/2 Pilot air operated, spring return   | 3.50 (7.72)   |        |
| 8325M21-AM1P | 1"BSP 3/2 Pilot air operated, spring return     | 3.50 (7.72)   |        |
| 5325M21-AM1P | 1 1/4"BSP 3/2 Pilot air operated, spring return | 5.00 (11.00)  |        |
| 7325M21-AM1P | 1 1/2"BSP 3/2 Pilot air operated, spring return | 5.00 (11.00)  |        |



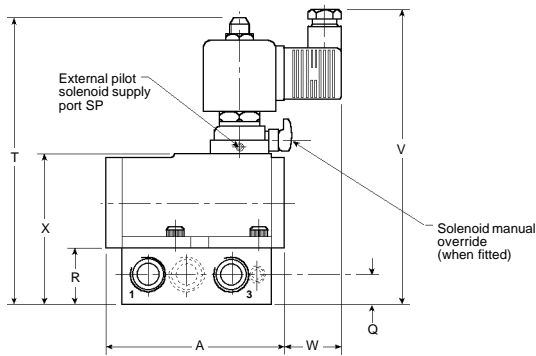
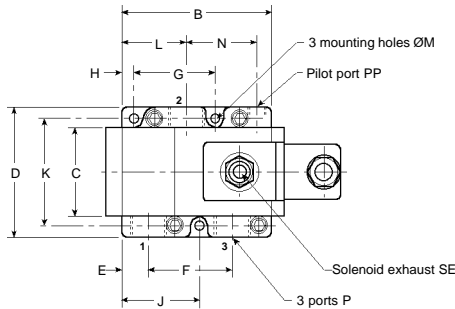
# 1/4", 3/8", 1/2", 3/4", 1", 1 1/4", 1 1/2" BSP 3/2 POPPET VALVES Pilot solenoid operated

**HEAVY  
DUTY  
VALVES**

## Installation dimensions mm

### 3/2 Pilot solenoid operated, spring return 1/4", 3/8", 1/2"

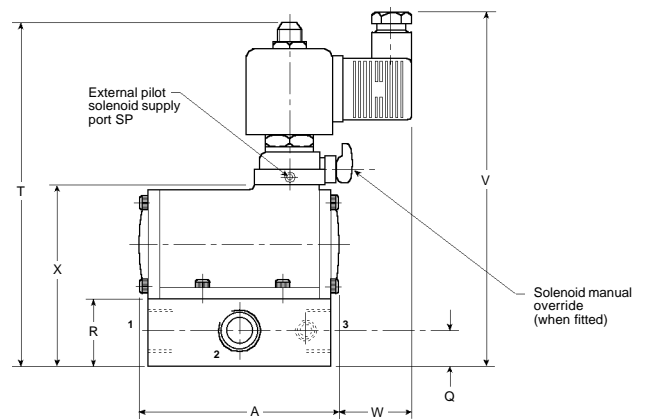
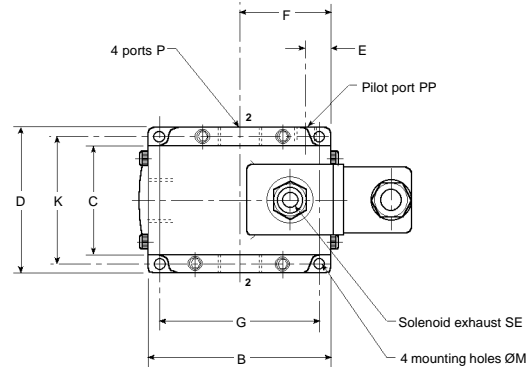
2325M24-AM1P4\*  
3325M24-AM1P4\*  
4325M24-AM1P4\*



| Port | N/C     | N/O     |
|------|---------|---------|
| 1    | Inlet   | Exhaust |
| 2    | Outlet  | Outlet  |
| 3    | Exhaust | Inlet   |

### 3/2 Pilot solenoid operated, spring return 3/4", 1", 1 1/4", 1 1/2"

6325M24-AM1P4\*  
8325M24-AM1P4\*  
5325M24-AM1P4\*  
7325M24-AM1P4\*



| Port | N/C     | N/O     |
|------|---------|---------|
| 1    | Inlet   | Exhaust |
| 2    | Outlet  | Outlet  |
| 3    | Exhaust | Inlet   |

Alternative outlet ports provide choice of connection with unused port plugged

| Model No       | A   | B   | C  | D   | E  | F  | G   | H | J  | K   | L  | M   | N  | P         | PP      | Q  | R  | SE    | SP      | T   | V   | W  | X   |
|----------------|-----|-----|----|-----|----|----|-----|---|----|-----|----|-----|----|-----------|---------|----|----|-------|---------|-----|-----|----|-----|
| 2325M24-AM1P4* | 98  | 80  | 48 | 70  | 14 | 45 | 45  | 6 | 43 | 58  | 34 | 5.5 | 38 | 1/4"BSP   | 1/8"BSP | 16 | 30 | G1/8" | 1/8"BSP | 172 | 178 | 26 | 80  |
| 3325M24-AM1P4* | 98  | 80  | 48 | 70  | 14 | 45 | 45  | 6 | 43 | 58  | 34 | 5.5 | 38 | 3/8"BSP   | 1/8"BSP | 16 | 30 | G1/8" | 1/8"BSP | 172 | 178 | 26 | 80  |
| 4325M24-AM1P4* | 98  | 80  | 48 | 70  | 14 | 45 | 45  | 6 | 43 | 58  | 34 | 5.5 | 38 | 1/2"BSP   | 1/8"BSP | 16 | 30 | G1/8" | 1/8"BSP | 172 | 178 | 26 | 80  |
| 6325M24-AM1P4* | 145 | 130 | 77 | 100 | 16 | 65 | 118 | - | -  | 88  | -  | 6.6 | -  | 3/4"BSP   | 1/8"BSP | 26 | 48 | G1/8" | 1/8"BSP | 219 | 225 | 33 | 130 |
| 8325M24-AM1P4* | 145 | 130 | 77 | 100 | 16 | 65 | 118 | - | -  | 88  | -  | 6.6 | -  | 1"BSP     | 1/8"BSP | 26 | 48 | G1/8" | 1/8"BSP | 219 | 225 | 33 | 130 |
| 5325M24-AM1P4* | 177 | 165 | 90 | 125 | 22 | 90 | 150 | - | -  | 110 | -  | 9   | -  | 1 1/4"BSP | 1/4"BSP | 30 | 60 | G1/8" | 1/8"BSP | 243 | 249 | 26 | 154 |
| 7325M24-AM1P4* | 177 | 165 | 90 | 125 | 22 | 90 | 150 | - | -  | 110 | -  | 9   | -  | 1 1/2"BSP | 1/4"BSP | 30 | 60 | G1/8" | 1/8"BSP | 243 | 249 | 26 | 154 |

\* Solenoid voltage - see position 14 page 700.7

For solenoid operator fitted with manual override specify 'P' in place of '-' in position 8 of model code

# HEAVY DUTY VALVES

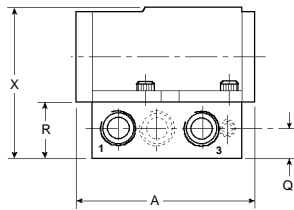
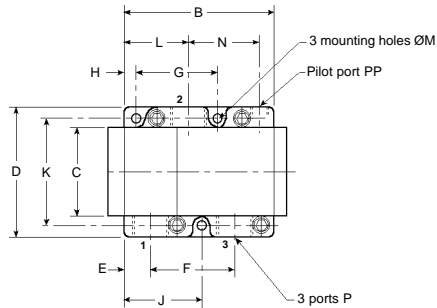
## 1/4", 3/8", 1/2", 3/4", 1", 1 1/4", 1 1/2" BSP 3/2 POPPET VALVES

Pilot air operated

### Installation dimensions mm

#### 3/2 Pilot air operated, spring return 1/4", 3/8", 1/2"

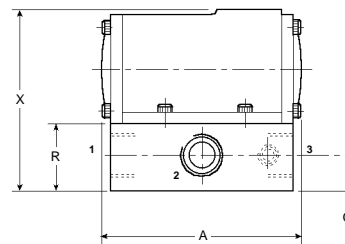
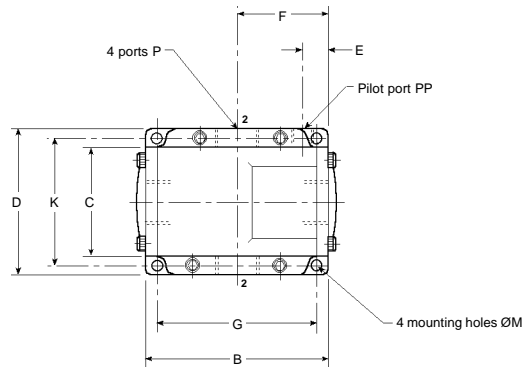
2325M21-AM1P  
3325M21-AM1P  
4325M21-AM1P



| Port | N/C     | N/O     |
|------|---------|---------|
| 1    | Inlet   | Exhaust |
| 2    | Outlet  | Outlet  |
| 3    | Exhaust | Inlet   |

#### 3/2 Pilot air operated, spring return 3/4", 1", 1 1/4", 1 1/2"

6325M21-AM1P  
8325M21-AM1P  
5325M21-AM1P  
7325M21-AM1P



| Port | N/C     | N/O     |
|------|---------|---------|
| 1    | Inlet   | Exhaust |
| 2    | Outlet  | Outlet  |
| 3    | Exhaust | Inlet   |

Alternative outlet ports provide choice of connection with unused port plugged

| Model No     | A   | B   | C  | D   | E  | F  | G   | H | J  | K   | L  | M   | N  | P         | PP      | Q  | R  | X   |
|--------------|-----|-----|----|-----|----|----|-----|---|----|-----|----|-----|----|-----------|---------|----|----|-----|
| 2325M21-AM1P | 98  | 80  | 48 | 70  | 14 | 45 | 45  | 6 | 43 | 58  | 34 | 5.5 | 38 | 1/4"BSP   | 1/8"BSP | 16 | 30 | 80  |
| 3325M21-AM1P | 98  | 80  | 48 | 70  | 14 | 45 | 45  | 6 | 43 | 58  | 34 | 5.5 | 38 | 3/8"BSP   | 1/8"BSP | 16 | 30 | 80  |
| 4325M21-AM1P | 98  | 80  | 48 | 70  | 14 | 45 | 45  | 6 | 43 | 58  | 34 | 5.5 | 38 | 1/2"BSP   | 1/8"BSP | 16 | 30 | 80  |
| 6325M21-AM1P | 145 | 130 | 77 | 100 | 16 | 65 | 118 | - | -  | 88  | -  | 6.6 | -  | 3/4"BSP   | 1/8"BSP | 26 | 48 | 130 |
| 8325M21-AM1P | 145 | 130 | 77 | 100 | 16 | 65 | 118 | - | -  | 88  | -  | 6.6 | -  | 1"BSP     | 1/8"BSP | 26 | 48 | 130 |
| 5325M21-AM1P | 177 | 165 | 90 | 125 | 22 | 90 | 150 | - | -  | 110 | -  | 9   | -  | 1 1/4"BSP | 1/4"BSP | 30 | 60 | 154 |
| 7325M21-AM1P | 177 | 165 | 90 | 125 | 22 | 90 | 150 | - | -  | 110 | -  | 9   | -  | 1 1/2"BSP | 1/4"BSP | 30 | 60 | 154 |